

THE WORST PRINCESS



WHAT TO EXPECT GUIDE

Information to support you to
enjoy your visit to watch
The Worst Princess

SPRING/SUMMER 2025

**FULL
HOUSE**

WHAT TO EXPECT

The Worst Princess is a live theatre adaptation of the bestselling picture book by Anna Kemp and Sara Ogilvie. It's 55 minutes long with no interval and is made for children aged 3+ and their families but is suitable for all to attend.

This guide will provide you with some information that we hope will help you feel more prepared so that you can look forward to and enjoy the show. If this guide does not answer a question you may have, or you would like to discuss the show or an access need with someone from Full House Theatre, you can email info@fullhouse.org.uk or call 01525 630783.

VENUES

We will be touring to a number of different venues with the show. Each venue has its own visitor and access information which may be useful when planning your visit and is available online on each theatre's website. We have links to all the theatres we are visiting on our website.

www.fullhouse.org.uk/the-worst-princess

RELAXED SHOWS

We encourage relaxed performances at all our shows. This means that:

You can talk or make noise when you need to.

You will have your own seat, but you can move, stretch, wiggle or leave the space as needed. We just ask that you don't come onto the stage.

If you do leave the space, you're welcome to come back in at any time.

There may be a separate space you can go to during the show if you need to leave (please check with the venue you're attending).

The sound will not be too loud, you're welcome to wear ear defenders if you find this more comfortable.

The space is well-lit, but lights will not be shone directly on the audience.

The lights will change on stage, but always in a gentle way. It may be dark at times, but there will never be a complete black out.

ABOUT THE SHOW

A summary of the plot (skip this page if you want the story to be a surprise)

Princess Sue is locked in a tower, waiting to be rescued by a prince. She's surrounded by books which have very strict and traditional rules about how a princess 'should behave'. Sue has very different ideas about how to live, and longs to be free to begin a life of adventures.

A handsome prince rides his horse through the kingdom, encountering a frog (who claims to also be a handsome prince), a rabbit and a pig. The prince arrogantly challenges each creature to a fight. The prince arrives and frees Sue, but her joy is short-lived; the prince won't allow her any fun or freedom.

After being taken to the prince's castle and told to pick out a pretty dress and behave, Sue spots a dragon and offers them a cup of tea. Sue and the dragon become friends and realise they're both having trouble with the prince. Angry that their new friend is being kept in a tower, the dragon decides to free Sue by destroying the castle.

The prince returns; furious at the damage. A series of slow-motion flight sequences break out, and the dragon sets the prince's shorts on fire. Princess Sue steps in and scolds them both for their behaviour.

She accepts that maybe she is 'The Worst Princess' – but she no longer cares. Sue is happy to embrace her true self and tear up the rule book. The frog from earlier reappears and the prince decides that he too wishes to tear up the rule book. He kisses the frog, and they leave together. Sue jumps onto the dragon's back and they fly off to begin a new life of adventures - everyone lives happily ever after.

ABOUT THE SHOW

The Worst Princess Themes:

Fantasy/Adventure

Fairytale

Friendship

Feminism

Gender roles

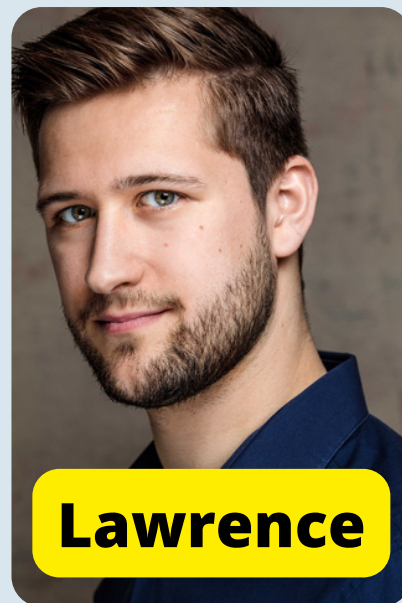
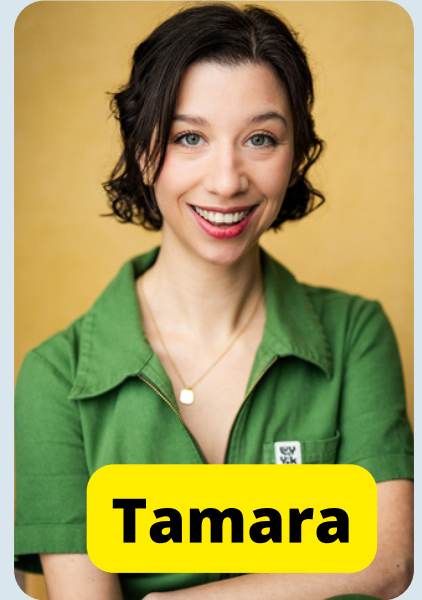
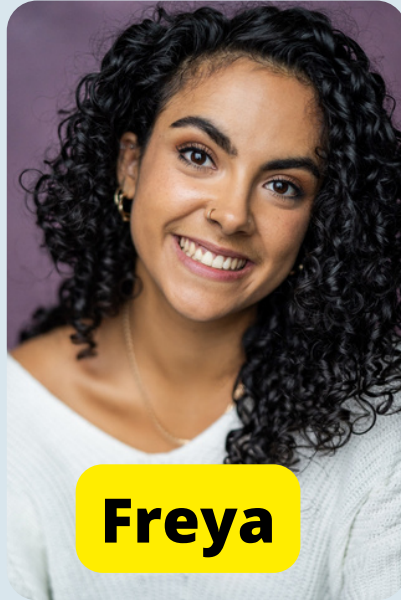
The story follows a linear narrative and is based in one time period. It is a colourful and highly visual show brought to life through puppetry and a cast of five people.



All photos © Shaun Armstrong

THE CAST

Our cast members are Susannah Cann, Tamara Saffir, Lawrence Harp, Freya Stephenson, and Kieron Michael . They are professional actors:



They may play one or more characters throughout the show and will communicate the story through speaking and singing.

They will all operate puppets throughout.

Some of their characters include:

- Susannah Cann - Princess Sue
- Lawrence Harp - Prince
- Ensemble - Dragon

COSTUME

Princess Sue will be wearing a purple dress with yellow flowers and yellow trainers. Her hair will be in long plaits with yellow ribbons. A crown sits on her head.

The ensemble will be wearing white long undershirts, large puffy pink/red/peach-coloured striped shorts with dark orange tights and black boots. They're wearing dark green berets on their heads. There is a medieval theme to the costume.

The prince is wearing the same costume as the ensemble with the addition of armour, a helmet and a sword.



HOW THE ACTORS INTERACT WITH THE AUDIENCE

The actors will look out to the audience as they're performing, they will not speak to anyone directly or single anyone out.

The actors will communicate the story by speaking and singing to the audience.

At the end of the performance, the actors may encourage you to clap and sing along with them. You can take part as much or as little as you wish.

THE SET

There are flats designed to look like castle walls with brick outlines, one is green, and one is pink. The green flat has an upper window and both have archways. There are a few shelves housing books on the 'walls' of the flats. There's a large

stack of books on wheels which the actors interact with, sit on and move around the space. There are also smaller flats with painted scenery that get brought onto the stage by the cast to change the location.



THE THEATRE

Depending on which theatre you visit, you will either have an allocated seat or seats will be unreserved, this means that when you arrive you choose where you want to sit from the spaces available. If you have an access need or a concern regarding seating, contact the venue who will be pleased to help you. You can use the venue links provided earlier to find out more.

MUSIC

There is a soundtrack of prerecorded music which includes a range of instruments. There will be times when the music is in the background, or the actors are singing along with it. There are moments when loud prerecorded sound effects play. Prerecorded voiceover narration is used at the beginning and end of the show.

LIGHTING AND SPECIAL EFFECTS

Lighting will be used on stage to light the set and the actors. Sometimes lighting will be used to focus on a smaller area of the stage, or to make sure we can see the actor and/or their puppet clearly. Whilst there will not be a black out, there will be moments of low lighting, and one short section features some use of shadows.

Haze is used throughout. This creates a very light fog-like effect on the stage. Haze should not impact breathing or cause coughing.

There's also a moment where a special effect of smoke is combined with red fabric to create the illusion of the prince's shorts catching on fire.

PUPPETS

There are a few puppets used in show. These include:

Dragon – operated by the ensemble using a number of separate parts. The ensemble speak as one to create the booming voice of the dragon.



Frog - operated and voiced by one of the cast.



Birds - operated, moved and voiced by the cast.



ABOUT THE SHOW - SCENE BY SCENE

(Spoilers ahead!)

SCENE ONE

Four actors appear on stage; they sing a song. A voice over introduces Princess Sue. She wonders when she will leave the castle and sings about adventure. She has books full of traditional ideas about what a princess 'should be'.



SCENE TWO

Princess Sue is bored. The prince enters singing and riding their horse through the kingdom. The prince encounters a frog, a rabbit and a pig and challenges each creature to a fight.



SCENE THREE

Sue is rescued, but she realises the prince does not want to allow her any fun or freedom and wishes to keep her in his tower. He orders her to pick out a pretty dress. Three actors, playing dresses enter the stage singing, encouraging Sue to pick them.



SCENE FOUR

We see the shadowy outline of the dragon which piece by piece forms on stage, operated by the ensemble. Sue spots the dragon and decides to offer them a cup of tea. They become friends and quickly realise that they're both having trouble with the prince. The dragon says they'll free Sue by destroying the castle.



SCENE FIVE

More haze/smoke is used as the castle 'explodes'. This is shown in slow motion by the actors, who scatter props around the scene. The prince enters the stage, furious at the damage. He tells Sue she is 'The Worst Princess' and challenges the dragon to a fight.



SCENE SIX

The prince and the dragon begin to fight shown in slow motion. Sue takes the sword from the prince vowing to fight to protect her friend if she must. Sue tells the prince to stop fighting and hands his sword back. The prince points his sword at Sue threateningly, telling her to 'know her place.'



SCENE SEVEN

The dragon protects Sue, and another slow-motion fight breaks out. The dragon mimes breathing fire and the prince's shorts catch on fire. This is shown by a red piece of cloth, resembling flames. Smoke rises as the prince sits, putting the fire out.



SCENE EIGHT

Sue scolds them both for their behaviour and embraces the fact that maybe she is 'The Worst Princess' – but she doesn't care. She wants to be her true self and tear up the rule book. The frog from earlier reappears and the prince decides that he too wishes to tear up the rule book. He kisses the frog, and they leave together to start their happily ever after.



SCENE NINE

Sue jumps onto the dragon's back and they fly off to begin a new life of adventures. A voiceover (the same narrator from the opening scene) tells us they're going to live happily ever after.

